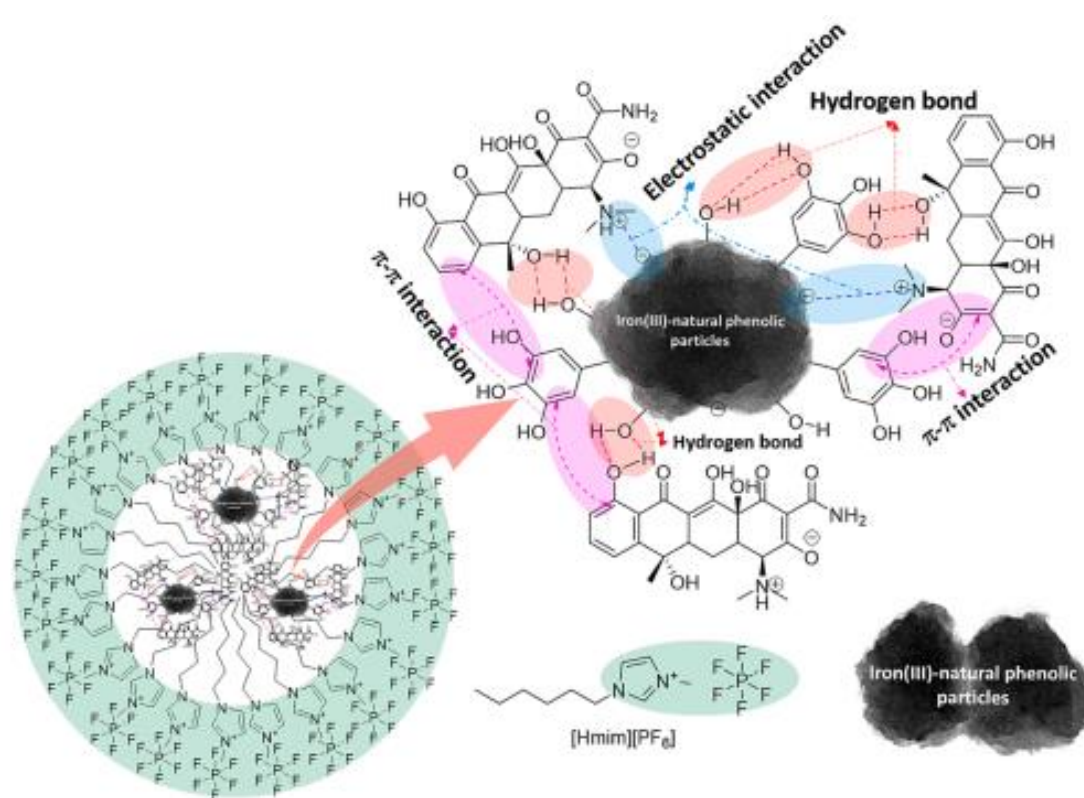


Vaccine Adherence and Behavioral Changes of Adults Regarding Prevention of COVID-19: A Community Survey Using the Theory of Planned Behavior

โดย Md. Nazmul Haque, Muhammed Ashraful Alam, Shuvashis Saha, **Suphawadee Panthumas**, Afrin Ahmed Clara, and Md. Parvez Iqbal Sharif.

Keywords: Behavioral change, COVID-19 prevention, vaccine adherence

Link: <http://doi.org/10.25133/JPSSv322024.011>



Synergy of iron-natural phenolic microparticles and hydrophobic ionic liquid for enrichment of tetracycline residues in honey prior to HPLC-UV detection

โดย Tammanoon Nilnit, Janjira Jeenno, **Sam-ang Supharoek**, Jitlada Vichapong, Watsaka Siriangkawut and Kraingkrai Ponhong

Keywords: Betel nut, Coextraction, Dispersive liquid–liquid microextraction, Dispersive micro solid phase extraction, Green extraction method, Natural reagent

Link: <http://doi.org/10.25133/JPSSv322024.011>

Item	Lowland	Mountain forest	p-value
Shear force, N	36.36±16.06	65.07±25.04	0.039
Sensory ratings			
Tenderness	6.75±0.32	7.21±0.15	0.011
Juiciness	6.41±0.43	6.57±0.32	0.498
Flavourness	6.87±0.53	7.34±0.14	0.003
Overall acceptability	6.79±0.35	7.05±0.32	0.216
Chemical composition (%)			
Moisture	74.77±2.27	73.21±0.84	0.146
Protein	12.98±1.42	18.67±1.34	<0.001
Fat	1.56±0.98	2.76±0.47	0.035
Ash	0.93±0.07	0.88±0.11	0.386

Sensory ratings (30 people) 1 = highly unfavorable, 5 = average, 9 = highly favorable.

Carcass characteristics, meat quality, sensory palatability and chemical composition of Thai native cattle grazing in lowland and Phu Phan mountain forest

โดย Nirawan Gunun, Chatchai Kaewpila , Rattikan Suwannasing, Waroon Khota , Pichad Khejornsart, **Chirasak Phoemchalard**, Norakamol Laorodphan , Piyawit Kesorn, and Pongsatorn Gunun

Keywords: Cattle, Chemical Composition, Fatty Acid Profiles, Grazing Systems, Meat Quality, Sensory Evaluation

Link: <https://doi.org/10.5713/ab.23.0265>

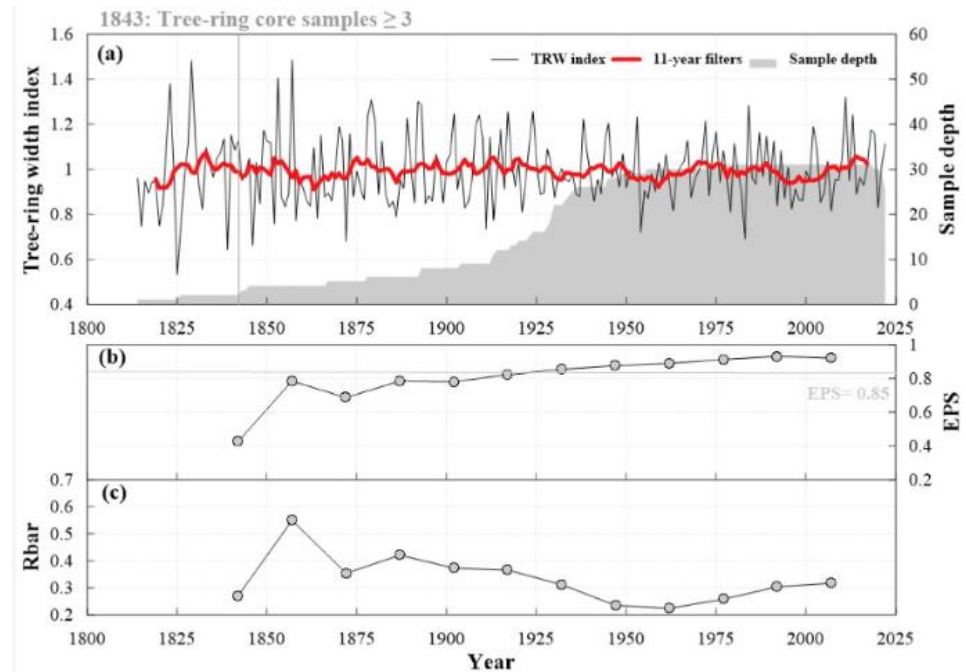
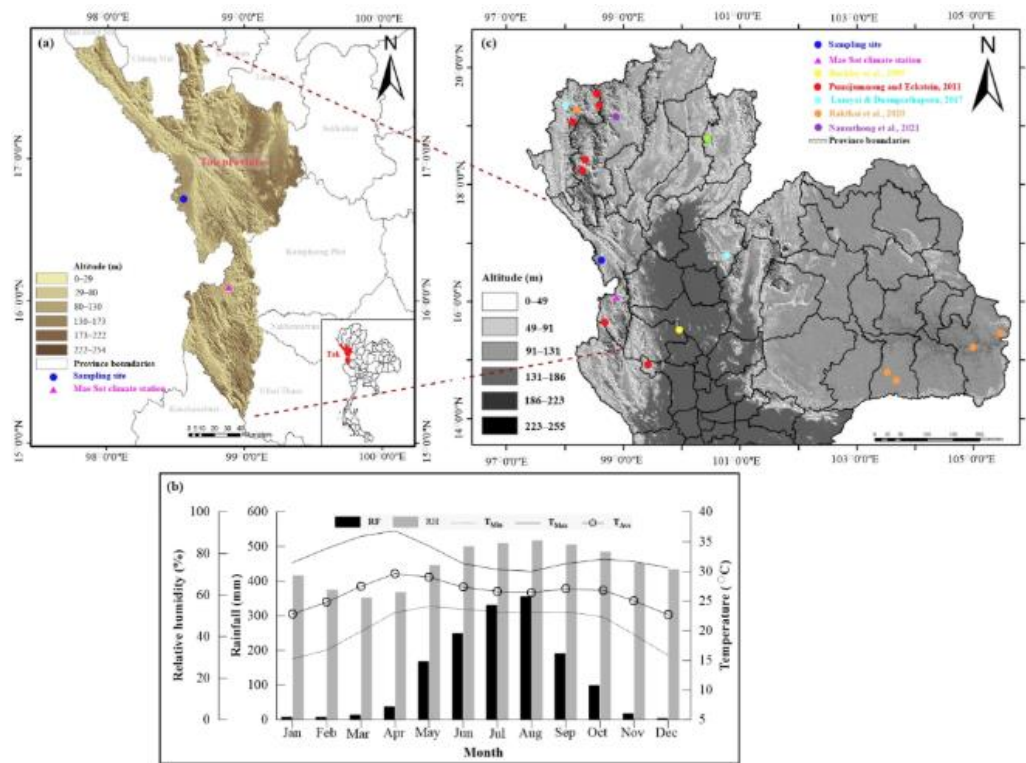


Estimation of aboveground carbon stock in service area of Ubon Ratchathani Zoo, Ubon Ratchathani province, Northeastern Thailand

โดย ผศ.ดร.โชติกา เมืองสง และคณะผู้วิจัย

Keywords: Biomass, Carbon credit, Carbon storage, Climate change, Ubon Ratchathani, Zoo

Link: [http://www.ijat-aatsea.com/pdf/v20_n1_2024_January/15_IJAT_20\(1\)_2024_Muangsong,%20C.\(25\).pdf](http://www.ijat-aatsea.com/pdf/v20_n1_2024_January/15_IJAT_20(1)_2024_Muangsong,%20C.(25).pdf)

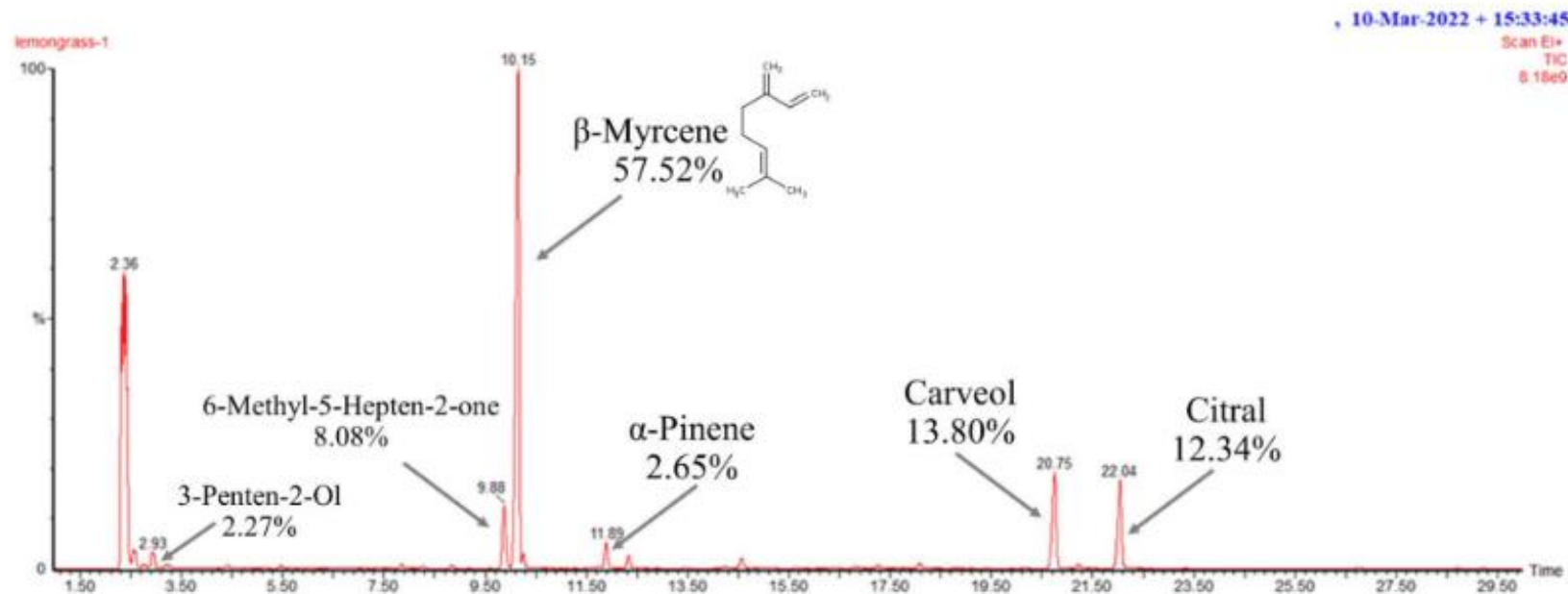


Growth Response of Thai Pine (*Pinus latteri*) to Climate Drivers in Tak Province of Northwestern Thailand

โดย Sasiwimol Inthawong ,Nathsuda Pumijumnong ,**Chotika Muangsong** ,Supaporn Buajan, Binggui Cai ,Rattanakorn Chatwatthana ,Uthai Chareonwong and **Uthaiwan Phewphan**

Keywords: Thailand, *Pinus latteri*, tree-ring width, dendrochronology, rainfall variations, climate change, extreme climatic events

Link: <https://doi.org/10.3390/f15020345>



***Cymbopogon citratus* L. essential oil as a potential anti-biofilm agent active against antibiotic-resistant bacteria isolated from chronic rhinosinusitis patients**

โดย Mintra Khosakueng, Suwimol Taweechaisupapong, **Wongwarut Boonyanugomol, Pornpan Prapatpong**, Saharut Wongkaewkhiaw and Sakawrat Kanthawong

Keywords: Essential oil, antibiotic-resistant bacteria, chronic rhinosinusitis, anti-biofilm agent, anti-quorum sensing

Link: <https://doi.org/10.1080/08927014.2024.2305387>

Perceptions of Service Recipients on the Roles of Community Health Nurses in Children's Primary Care During the COVID-19 Outbreak in Northeastern Thailand

โดย Prakaikeaw Siripoon, **Pairin Yodsuban**, **Ruangurai Amornchai**, Bualun Hinkaew, and Supa Pengpid

Keywords: Children services, Community healthnurse, COVID-19 pandemic, Nurse roles, Primary careunits

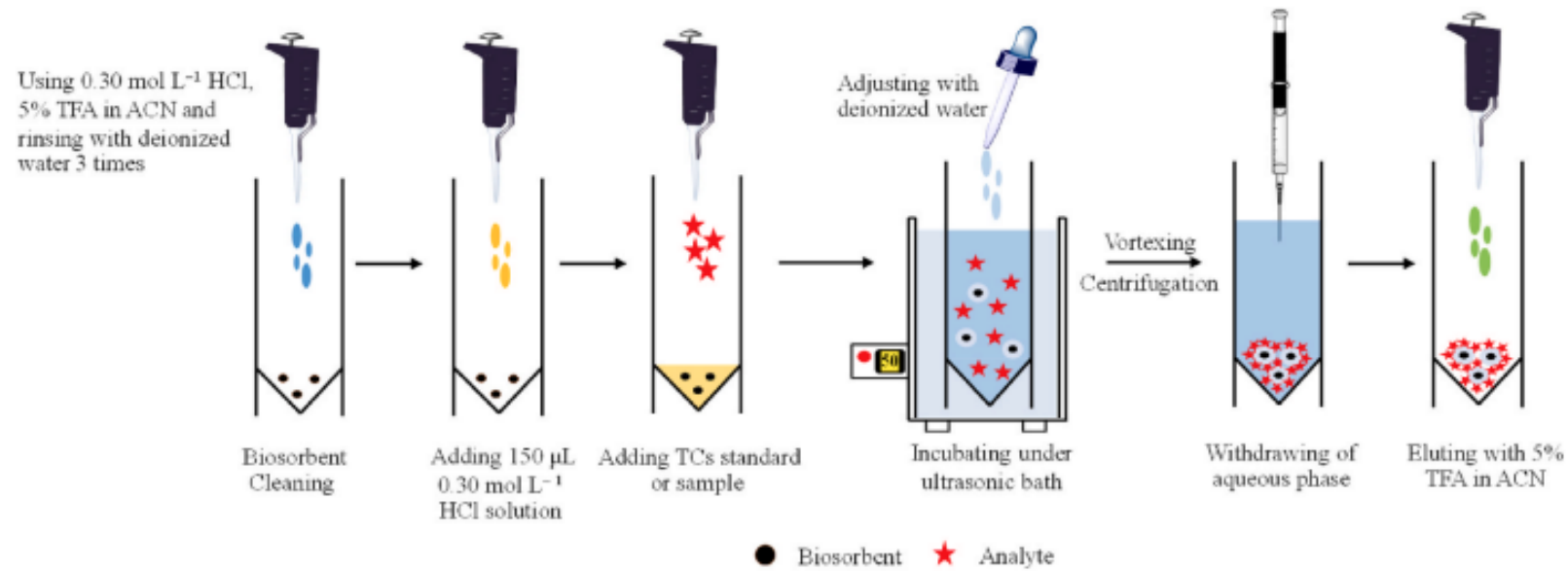
Link: <http://doi.org/10.25133/JPSSv322024.011>

Carbon footprint assessment from Electricity in Ubon Ratchathani Zoo in Ubon Ratchathani province, Thailand

โดย **Kulsuwan, P.**, Binhad, I. Thongdeephan, T. Chanhom, D. , Naipreede, K. , Khambai, N. and Pontham, J.

Keywords: Carbon footprint, Electrical energy usage behavior, Greenhouse gas, Climate change, CO₂ emission

Link: [http://www.ijat-aatsea.com/pdf/v20_n2_2024_March/10_IJAT_20\(2\)_2024_Kulsuwan,%20P.\(7\).pdf](http://www.ijat-aatsea.com/pdf/v20_n2_2024_March/10_IJAT_20(2)_2024_Kulsuwan,%20P.(7).pdf)

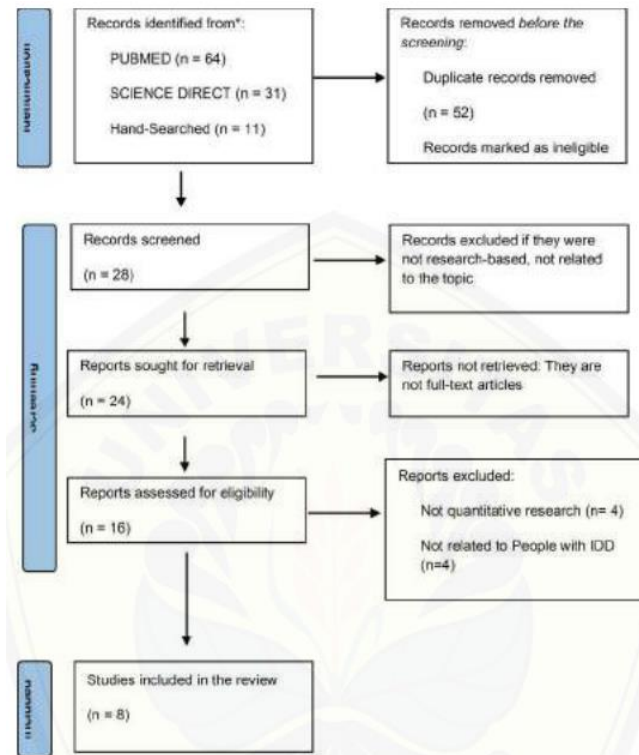


Green hairy basil seed mucilage biosorbent for dispersive solid phase extraction enrichment of tetracyclines in bovine milk samples followed by HPLC analysis

โดย Nongnapas Nakhonchai , Nattaya Prompila , Kraingkrai Ponhong , Watsaka Siriangkhawut , Jitlada Vichapong , **Sam-ang Supharoek**

Keywords: Antibiotic, Food sample, Extraction method, Natural adsorbent, Sample preconcentration

Link: <https://doi.org/10.1016/j.talanta.2024.125645>

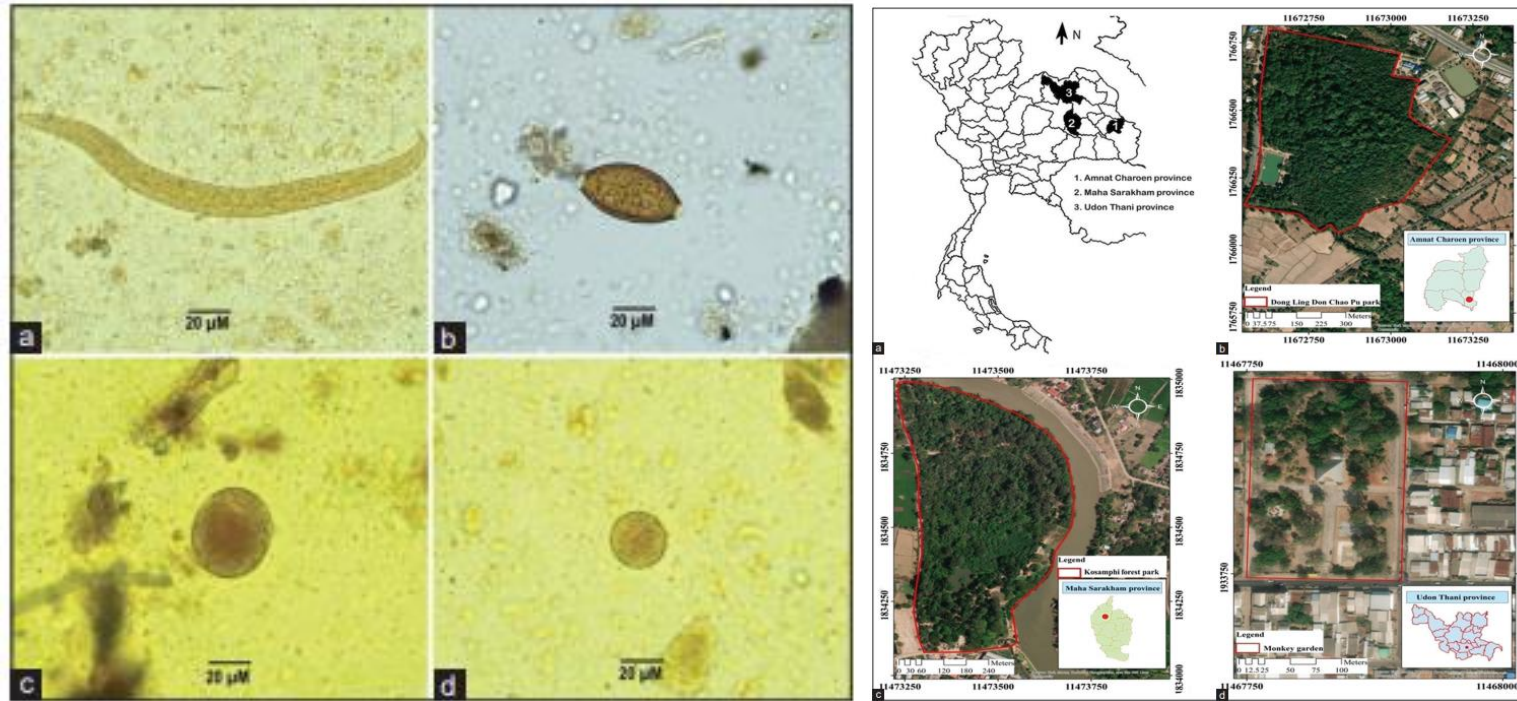


Stimulating development method to promote health in children with intellectual disability during the covid-19 pandermic crisis: a systematic literature review

โดย Benjayamas Pilayon, **Pairin Yodsuban**, Niruwan Turnbull, chanicha Chaitontueng, Muhamad Zulfatul A la, Rondhianto

Keywords: Children with intellectual disabilities, COVID-19 pandemic, Stimulating development systematic literature review

Link: <https://doi.org/10.19184/nlj.v9il.46815>



Prevalence and diversity of gastrointestinal parasites in long-tailed macaques at Kosamphi Forest Park, Kumphawapi Monkey Garden, and Dong Ling Don Chao Pu Park, North-east Thailand

โดย ดร.อิสระพงศ์ โพธิ์สุข และคณะผู้วิจัย

Keywords: Dong Ling Don Chao Pu Park, gastrointestinal parasite, Kosamphi Forest Park, Kumphawapi Monkey Garden, long-tailed macaques

Link: <https://doi.org/10.14202/vetworld.2024.1391-1396>

ระดับ	ในเขตเมือง		นอกเขตเมือง	
	จำนวน(คน)	ร้อยละ	จำนวน(คน)	ร้อยละ
พฤติกรรมระดับสูง (3.68-5.00)	2	1.0	5	2.6
พฤติกรรมระดับปานกลาง (2.34-3.67)	19	9.9	20	10.5
พฤติกรรมระดับต่ำ (1.00-2.33)	170	89.0	166	86.9



การเปรียบเทียบพฤติกรรมการสูบบุหรี่ไฟฟ้าและการตัดสินใจเลือกซื้อบุหรี่ไฟฟ้าระหว่างนักศึกษาสถาบันอาชีวศึกษาในเขตเมืองและนอกเขตเมือง จังหวัดอำนาจเจริญ

โดย สุรวิรัตน์ บุญแต่ง, นรินทร์ทร สายกระโทก, ปิยะธิดา มาสุข, ผศ.ดร.ประเสริฐ ประสมรักษ์, ศิริกานต์ ทองดี, อุไรวรรณ กุมภีโร

Keywords: พฤติกรรมการสูบบุหรี่ไฟฟ้า, การตัดสินใจ, บุหรี่ไฟฟ้า, นักศึกษาสถาบันอาชีวศึกษา

Link: <https://he01.tci-thaijo.org/index.php/JCCPH/article/view/260735>

Factors	n (%)	Factors	n (%)
Age (years)		Sufficiency of income	
<35	10 (25.0)	Enough income	11 (27.5)
35 to 44	11 (27.5)	In debt	2 (5.0)
45 to 54	7 (17.5)	Uncertain	27 (67.5)
≥55	12 (30.0)	Congenital disease	
Mean (standard deviation)	44.10 (11.57)	Diabetes	1 (2.5)
Min-max	25 to 63	Chronic kidney failure	1 (2.5)
Sex		Unknown	8 (20.0)
Female	37 (92.5)	None	30 (75.0)
Male	3 (7.5)	Number of family members	
Marital status		<3	3 (7.5)
Married	35 (87.5)	3 to 5	23 (57.5)
Widowed/divorced/separated	5 (12.5)	6 to 8	11 (27.5)
Education		≥9	3 (7.5)
Elementary	23 (57.5)	Mean (standard deviation)	4.93 (1.91)
Junior high school	6 (15.0)	Min-max	2 to 9
Senior high school	5 (12.5)	Relationship	
Diploma	6 (15.0)	Parents	16 (40.0)
Occupation		Grandparents	11 (27.5)
Agriculture	25 (62.5)	Relatives	13 (32.5)
General employee	9 (22.5)	Channels for receiving information	
Self-employed	3 (7.5)	Training and advice from public health officials	24 (60.0)
Unemployed	3 (7.5)	Television or radio programs	4 (10.0)
Income per month (Baht)		Advice from relatives or friends with knowledge and experience	27 (67.5)
≤1,000	8 (20.0)	Reading books, textbooks, manuals, or magazines	8 (20.0)
1,001 to 6,000	24 (60.0)	Having relatives or children with developmental delays	
6,001 to 11,000	7 (17.5)	None	39 (97.5)
≥11,001	1 (2.5)	Not known/not sure	1 (2.5)
Median [interquartile range]	4,000 [3,000]		
Min-max	600 to 17,000		

Characteristics of caregivers/parents		
	A prepared caregivers/parents	An unprepared caregivers/parents
		
Enhancing knowledge in childhood development	1) Promote caregiving and development for children under 2 years old. 2) Provide training to enhance knowledge in online media literacy to promote children's development.	1) Promote caregiving and development for children under 2 years old in accordance with community practices. 2) Provide training to enhance knowledge in development and promote development in line with community practices. 3) Foster understanding of the risks of parenting with smartphones.
Nurturing skills to promote childhood development	Modern caregiving skills include: 1) Selecting and reading stories for children. 2) Choosing toys to promote childhood development. 3) Engaging in age-appropriate play and activities. 4) Steering interests. 5) Addressing inappropriate behavior (aggressiveness, short attention span).	Create an environment conducive to developmental promotion by: 1) Community Development Volunteers (CDVs) serving as developmental promoters (volunteer storytellers at home). 2) Organizing play areas in the community, providing age-appropriate developmental toys, with Youth Volunteers (teacher assistants) overseeing.
Fostering love bonds	Innovative communication with your child through online platforms (Line application)	A caregiver coach as a compassionate parent.
Community-level support measures		
Elevating early childhood development centers	Elevate to an Early Childhood Development and Family Center: - Parent orientation and guidance on collaborative developmental approaches. - Parent-child home activities. - Joint developmental assessment by public health officials, childcare providers, and parents. - Formulation of a Care Plan and continuous follow-up on outcomes.	
Instilling the values of "Community's Beloved Children"	Establish a Community Early Childhood Development Promotion Committee: - Coordinate with local government, community networks, and parent representatives to form a committee for promoting early childhood development in the community. - Collaboratively analyze issues and develop community measures to promote child development. - Create a movement emphasizing "Every child in the community is everyone's child". - Implement a continuous monitoring system.	

Family and Community Capability Developing Model Efficacy in Promoting Early Childhood Development of Thailand

โดย ผศ.ดร.ประเสริฐ ประสมรักษ์ และคณะผู้วิจัย

Keywords: Childhood developmental disorders (CDD); Family and community capability developing model; Primary child caregivers; Developmental Surveillance and Promotion Manual (DSPM)

Link: <https://doi.org/10.35755/jmedassocthai.2024.7.14010>